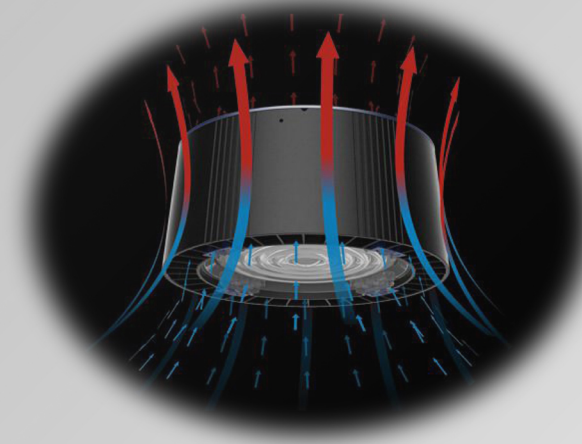
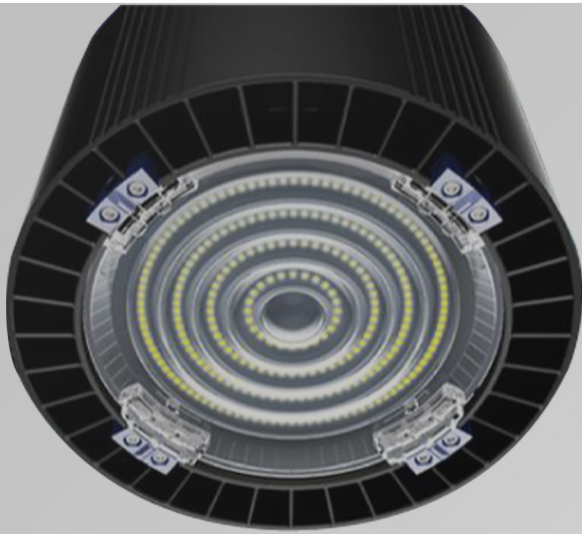
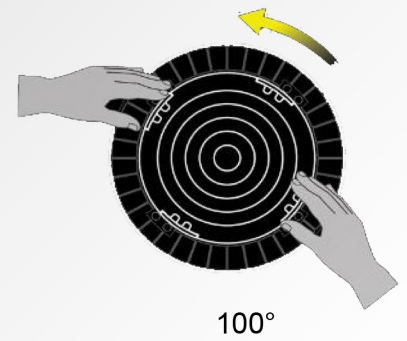
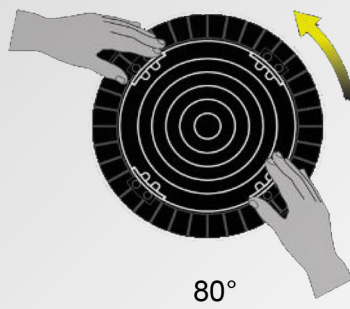
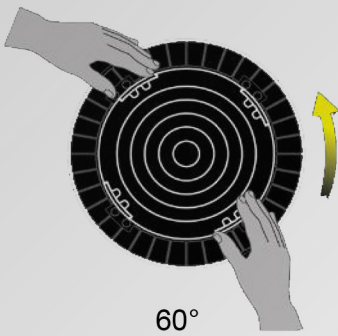


RIPPLE LED HIGH BAY



Adjustable Beam Angle 60°, 80° & 100°

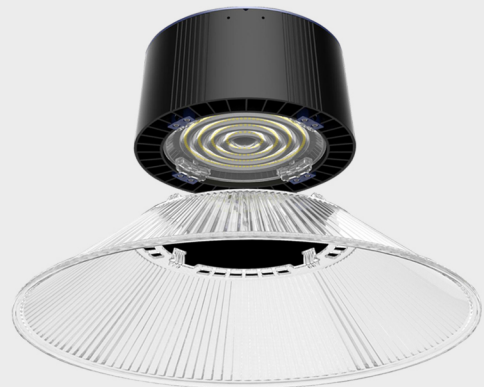
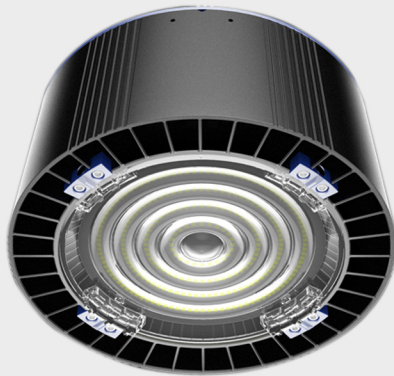


ZEN ILLUMINATION PTE LTD

3 Ang Mo Kio Street 62, #03-23/24 LINK @ AMK , Singapore 569139

Tel : (65) 6287 7718, Fax : (65) 6383 1108, enquiry@zen-illumination.com, www.zen-illumination.com

RIPPLE LED HIGH BAY



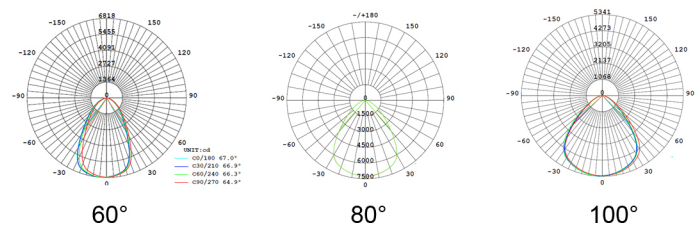
Optional : PMMA reflector available

LUMINAIRES SPECIFICATIONS

| | |
|-----------------------|--|
| Model No. | ECCO HBA01-08032 (80W) ECCO HBA01-10032 (100W) ECCO HBA01-12032 (120W) ECCO HBA01-15032 (150W) ECCO HBA01-18011 (180W) |
| Fitting Material | Die-cast aluminum Non-corrosive and unrestricted double channel heat sink design. |
| Fitting Color | Black |
| Ingress Protection | IP42 |
| Input Voltage | AC100-277V/ 305V |
| Power Frequency | 50/60Hz |
| Operating Temperature | -40 ~ +50°C |
| Beam Angle | 60°, 80°, 100° |
| Dimension | Dia 270 * H130mm |
| Power Supply | Mean Well (ELG) |

APPLICATION

Warehouses, Exhibition Halls, Multipurpose Halls, Production Areas & Factories

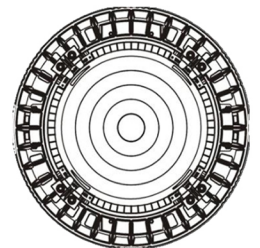


LED MODULE SPECIFICATIONS

| | |
|-----------------------|---|
| Color Temperature | 3000K, 4000K, 5000K |
| Color Rendering Index | 80Ra |
| LEDs Chip | Philips3030/ Nichia3030 |
| Lumen | 130lm/w (Philips3030) 145lm/w (Nichia3030) |



Top View



Bottom View

ZEN ILLUMINATION PTE LTD

3 Ang Mo Kio Street 62, # 03-23/24 LINK@AMK, Singapore 569139

Tel : (65) 6287 7718, Fax : (65) 6383 1108, enquiry@zen-illumination.com, www.zen-illumination.com