

Fluorescent Lamp Louvre Fitting (Surface Mount)



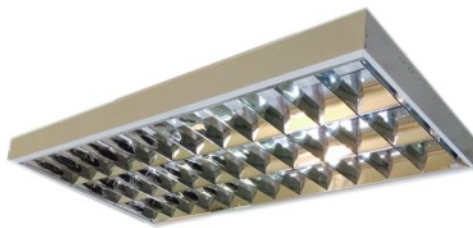
JAC320S



JMF340S



JAC240S/HD(1'x4')



JMF340S/VDU



JAC240S/HD (2'x4')

High quality sheet steel housing material, fully coated with epoxy powder coated finished. Single parabolic mirror louvre, double parabolic mirror louvre and prismatic diffuser type are available. Mainly use for general lighting in school, office, supermarket, complexes, etc...

**Low loss ballast and electronic ballast are available upon request.
Can replace by LED tube.

Ordering Information with T8 Tube (Surface Mounted)

Wattage	Single Parabolic Mirror Louvre	VDU-Double Parabolic Mirror Louvre	Prismatic Diffuser With Hinged Door	Dimension
2x18W	JMF 220S	JMF 220S/VDU	JAC 220S/HD	600x600
2x18W	JMF 220S (1'x2')	JMF 220S/VDU(1'x2')	JAC 220S/HD(1'x2')	300x600
3x18W	JMF 320S	JMF 320S/VDU	JAC 320S/HD	600x600
4x18W	JMF 420S	JMF 420S/VDU	JAC 420S/HD	600x600
2x36W	JMF 240S	JMF 240S/VDU	JAC 240S/HD	600x1200
2x36W	JMF 240S (1'x4')	JMF 220S/VDU(1'x4')	JAC 240S/HD (1'x4')	300x1200
3x36W	JMF 340S	JMF 340S/VDU	JAC 340S/HD	600x1200
4x36W	JMF 440S	JMF 440S/VDU	JAC 440S/HD	600x1200

Ordering Information with T5 Tube (Surface Mounted)

Wattage	Single Parabolic Mirror Louvre	VDU-Double Parabolic Mirror Louvre	Prismatic Diffuser With Hinged Door	Dimension
2x14W	JMF 214S	JMF 214S/VDU	JAC 214S/HD	600x600
2x14W	JMF 214S (1'x2')	JMF 214S/VDU(1'x2')	JAC 214S/HD(1'x2')	300x600
3x14W	JMF 314S	JMF 314S/VDU	JAC 314S/HD	600x600
4x14W	JMF 414S	JMF 414S/VDU	JAC 414S/HD	600x600
2x28W	JMF 228S	JMF 228S/VDU	JAC 228S/HD	600x1200
2x28W	JMF 228S (1'x4')	JMF 228S/VDU(1'x4')	JAC 228S/HD (1'x4')	300x1200
3x28W	JMF 328S	JMF 328S/VDU	JAC 328S/HD	600x1200
4x28W	JMF 428S	JMF 428S/VDU	JAC 428S/HD	600x1200