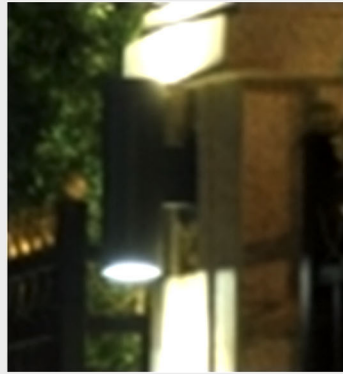


# SURFACE MOUNT WALL LIGHT SERIES



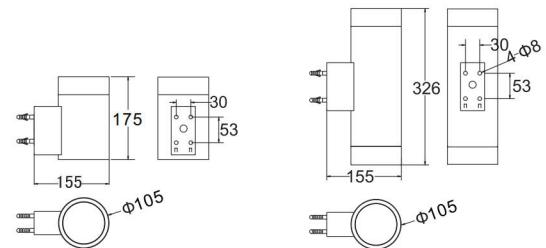
## LUMINAIRES SPECIFICATIONS

Model No.	ECCO HB318 W01 (28W LED )
Fitting Material	High pressure die cast aluminum housing. 4mm thickness tempered glass, silicon waterproof gasket, 304 stainless steel external screw
Ingress Protection	IP65
Input Voltage	AC100-240V
Power Frequency	50/60Hz
Diffuser Cover	4mm thickness tempered glass
Optical Reflector	High purity anodized aluminum reflector
Beam Angle	24°
Dimension	As shown photo (mm)
Power Supply	Integral LED driver

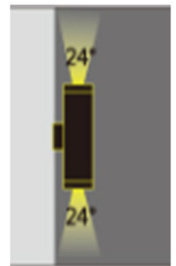
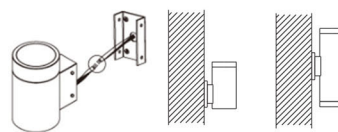
## APPLICATION

Condominiums, commercial and industrial buildings, link-ways hospitals and restaurants etc...

### Dimension



### Installation



## LED MODULE SPECIFICATIONS

Color Temperature	3000K, 4000K, 6000K
Light Source	Epistar LED chip
Color Rendering Index	Ra≥80
Lumen	1390 lm (1x28W / 3000K)

ZEN ILLUMINATION PTE LTD

3 Ang Mo Kio Street 62, #03-23/24 LINK @ AMK, Singapore 569139

Tel : (65) 6287 7718, Fax : (65) 6383 1108, enquiry@zen-illumination.com, www.zen-illumination.com