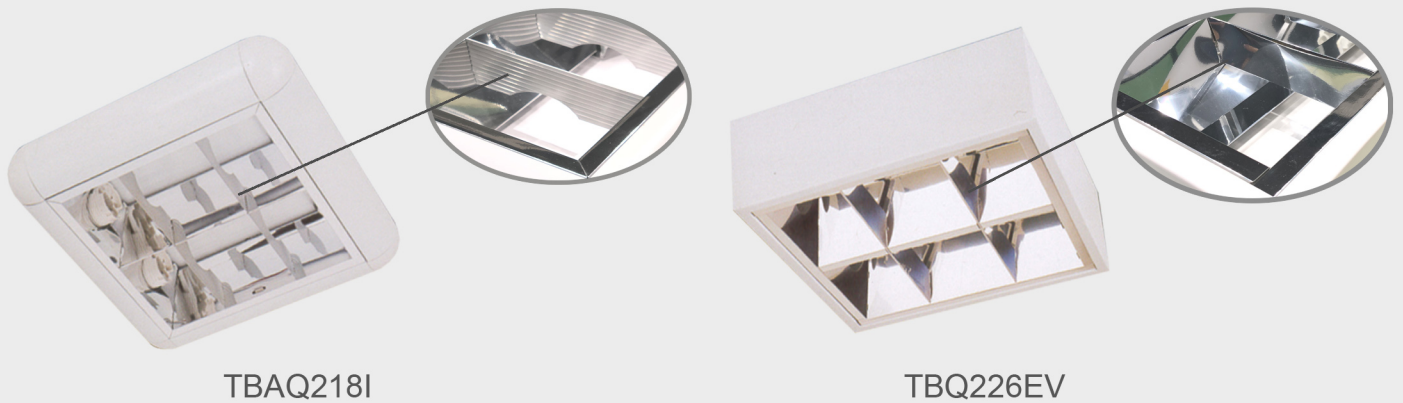


# SURFACE MOUNTED COMPACT FLUORESCENT FITTING



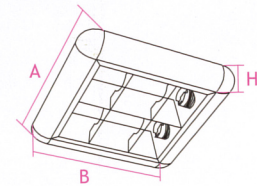
Available in PLC Tube & LED PLC Tube

## LUMINAIRES SPECIFICATIONS

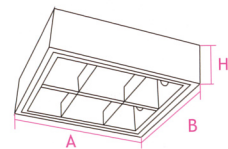
Fitting Material	High quality sheet steel housing material, fully coated with epoxy powder coated finished.
Ingress Protection	IP20
Input Voltage	AC220-240V
Power Frequency	50/60Hz
Mounting	Surface Type
Beam Angle	120°
Dimension	As shown photo (mm)
Power Supply	Electronic ballast and magnetic ballast Optional: HF electronic ballast available

## APPLICATION

Mainly used for commercial lighting, schools, offices, and stairs case.



Single Parabolic Compact Fluorescent Fitting



Double Parabolic Compact Fluorescent Fitting

Product Code	Lamp	Lamp Holder	Dimension(mm) A x B x H	Remarks
TBAQ218I	2 x 18W PLC	G24d / G24q	300 x 300 x 68	Available in PLC Tube & LED PLC Tube
TBAQ226I	2 x 26W PLC	G24d / G24q	300 x 300 x 68	
TBQ218EV	2 x 18W PLC	G24d / G24q	300 x 300 x 85	
TBQ226EV	2 x 26W PLC	G24d / G24q	300 x 300 x 85	

ZEN ILLUMINATION PTE LTD

3 Ang Mo Kio Street 62, #03-23/24 LINK @ AMK, Singapore 569139

Tel : (65) 6287 7718, Fax : (65) 6383 1108, enquiry@zen-illumination.com, www.zen-illumination.com